

STORY CO.

REVETMENT

IMN-035-4(143)107--OE-85

LETTING DATE
May 20, 2008



Iowa Department of Transportation Highway Division

PLANS OF PROPOSED IMPROVEMENT ON THE INTERSTATE ROAD SYSTEM STORY COUNTY REVTMENT

I-35 at Walnut Creek Just N. of 290th St.

SCALES: As Noted

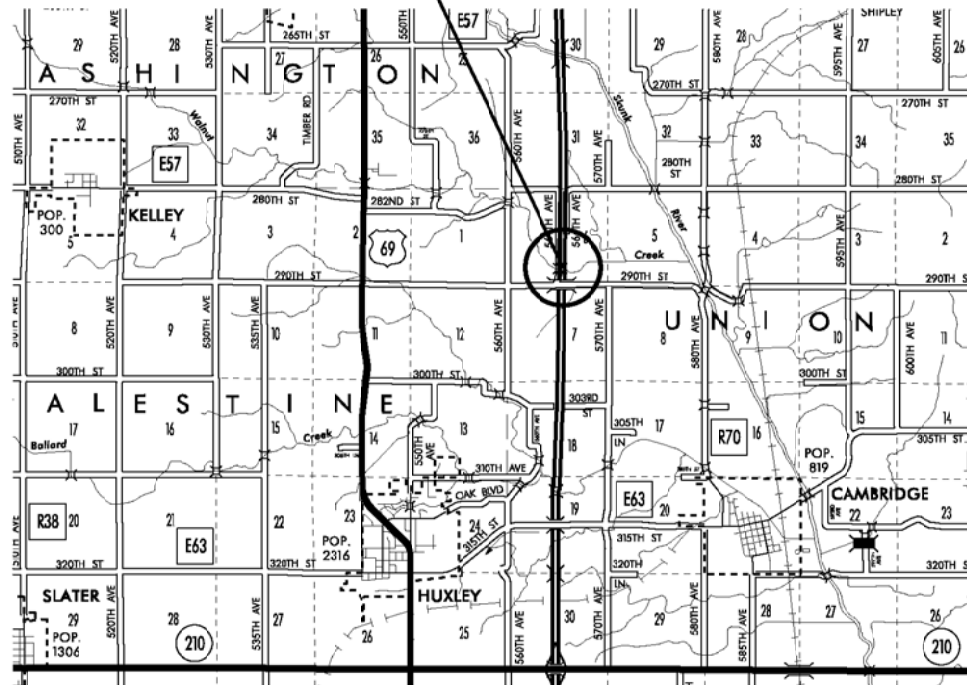
The Iowa Department of Transportation Standard Specifications for Highway and Bridge Construction, series 2001, plus General Supplemental Specifications; and applicable Supplemental Specifications, Developmental Specifications, and Special Provisions, shall apply to construction on this project.

Value Engineering Saves. Refer to Article 1105.15 of the Specifications.

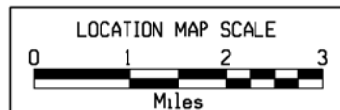
NO MILEAGE SUMMARY



STA. 274+00.00
BEGIN



R-23W



04-30-02	101-4
DESIGN DATA RURAL	
20	AADT 37,900 V.P.D.
20	AADT -- V.P.D.
20	DHV -- V.P.H.
TRUCKS	-- %
Total	
Design ESALs	--

REVISIONS

TOTAL	7
PROJECT IDENTIFICATION NUMBER	
04-85-035-010	
PROJECT NUMBER	
IMN-035-4(143)107--OE-85	
R.O.W. PROJECT NUMBER	

INDEX OF SHEETS

105-3
10-18-05

No.	Description
A.1	Title Sheet
A.2	Legend and Symbol Information Sheet
C.1-C.2	Estimate of Quantities
U.1-U.2	Special Traffic Control Details
V.1	Situation Plan

ROADWAY DESIGN



I hereby certify that this engineering document was prepared by me or under my direct personal supervision and that I am a duly licensed Professional Engineer under the laws of the State of Iowa.

Signature Robert A. Welper Date 03/04/08

Printed or Typed Name Robert A. Welper

My license renewal date is December 31, 20 09

Pages or sheets covered by this seal: A.1-A.2, C.1-C.2, U.1-U.2, V.1

ENGLISH IOWA DOT DESIGN TEAM **Welper\Altenhofen**

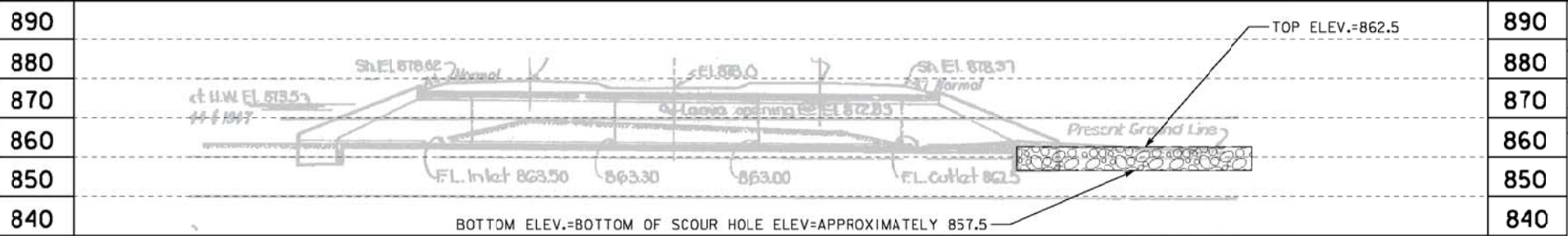
STORY COUNTY

PROJECT NUMBER

IMN-035-4(143)107--OE-85

SHEET NUMBER

A.1



LONGITUDINAL SECTION ALONG C ROADWAY

ESTIMATED PROJECT QUANTITIES

ITEM NO.	ITEM CODE	ITEM	UNIT	TOTAL	AS BUILT QUANTITY
1	2507-6800061	REVTMENT, CLASS E RIPRAP	T	1020	

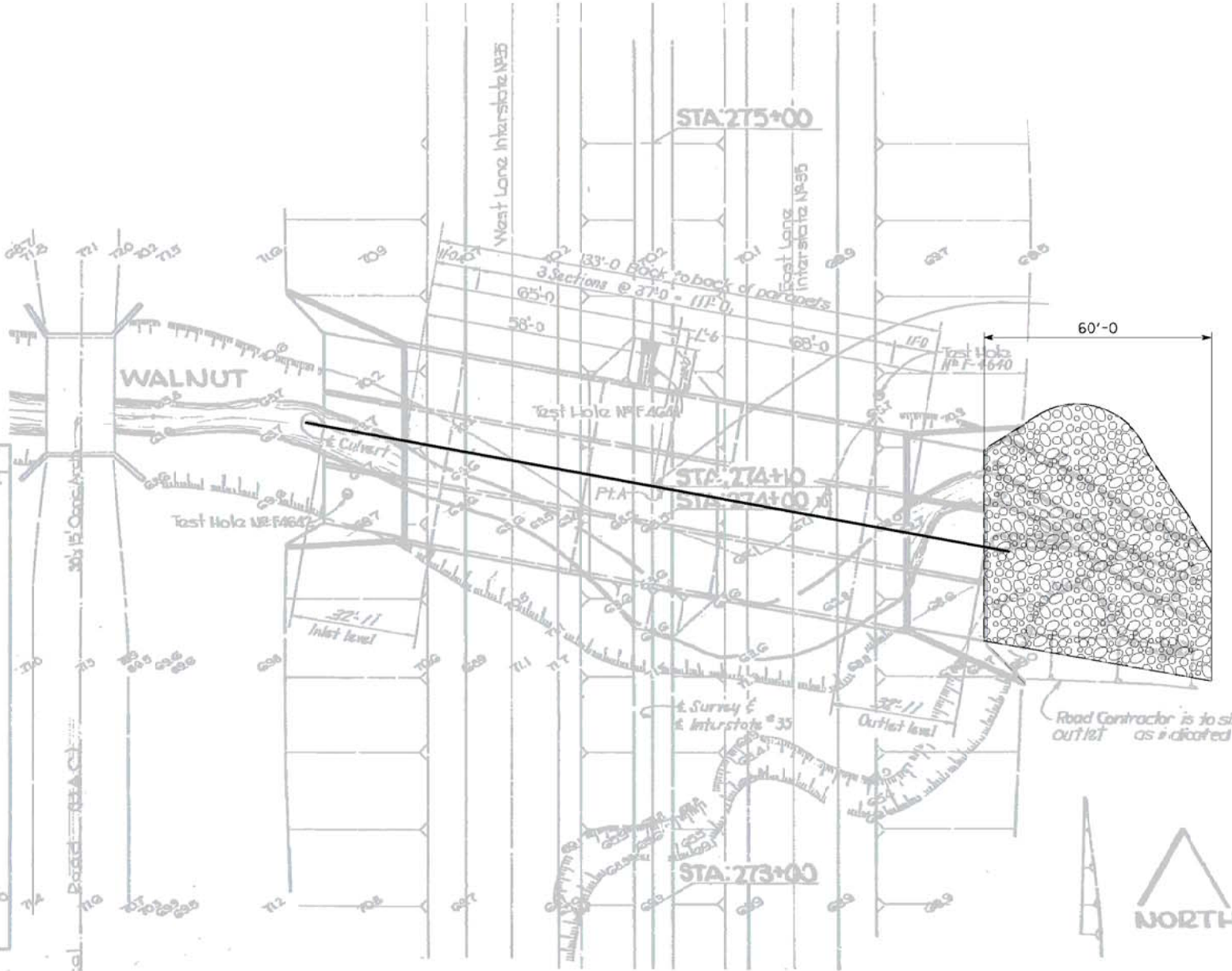
GENERAL NOTES:

THIS DESIGN IS FOR STREAMBANK REPAIR TO THE EXISTING TRIPLE 15'-18'-15' X 12' REINFORCED CONCRETE BOX (RCB) CULVERT AT I-35 OVER WALNUT CREEK, 4.2 MILES NORTH OF JCT. IA 210. COPIES OF THE ORIGINAL DESIGN PLANS WILL BE MADE AVAILABLE TO THE CONTRACTOR. CONTACT THE OFFICE OF CONTRACTS - HIGHWAY DIVISION - IOWA D.O.T. - AMES.

THE REPAIR SHALL CONSIST OF THE FOLLOWING WORK.
ALL WORK IS ON THE DOWNSTREAM (WEST) SIDE OF I-35, AT THE OUTLET OF THE RCB.

THE WORK CONSISTS OF FILLING IN A SCOUR HOLE AT THE RCB OUTLET WITH CLASS E RIPRAP. THE SCOUR HOLE IS APPROXIMATELY 5 FT. DEEP AND EXTENDS APPROXIMATELY 60 FT. BEYOND THE APRON ON THE RCB. THE SCOUR HOLE HAS ERODED BACK INTO THE NORTH BANK. PLACE CLASS E RIPRAP IN THE ENTIRE SCOUR HOLE. THE TOP ELEVATION OF THE RIPRAP SHOULD MATCH THE OUTLET FLOWLINE OF THE RCB (862.5) WITHIN THE SCOUR HOLE. DO NOT CAUSE ANY DAMAGE TO THE RCB HEADWALL WHILE PLACING RIPRAP.

THESE PLANS ARE BASED ON ORIGINAL DESIGN NO. 762. THIS DESIGN IS SHOWN IN LIGHT LINES. NO SURVEY WAS DONE FOR THIS PROJECT. LOCATIONS AND DIMENSIONS OF FEATURES SHOWN ARE APPROXIMATE. FIELD VERIFICATION IS RECOMMENDED.



SITUATION PLAN

HYDRAULIC DATA

DRAINAGE AREA= 19 MI²
Q₅₀= 4000 CFS
STAGE W/ HEADWATER= 873.7
INFO FROM DESIGN #762

LOCATION

I-35 OVER WALNUT CREEK
T 82 N R 23 W
SECTION 6
UNION TOWNSHIP
STORY COUNTY
BRIDGE MAINT. NO. 8506.95035



PRELIMINARY

DESIGN FOR 10° SKEW LA
STREAMBANK REPAIRS
TRIPLE 15'-18'-15'x12' RCB CULVERT
SITUATION PLAN
STATION: 274+10, RT X
STORY COUNTY
IOWA DEPARTMENT OF TRANSPORTATION - HIGHWAY DIVISION
DESIGN SHEET NO. ____ OF ____ FILE NO. 30179 DESIGN NO. 307